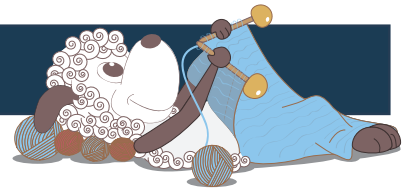


Kastellet - a lovely knitted top



Design: Ditte Lerche

Kastellet is a gorgeous knitted top for summer and spring. The beautiful yellow colour and lovely round yoke with the charming eyelet pattern makes the design almost irresistible.

4th English edition - April 2019 © Filcolana A/S
English translation: Signe Strømgaard

Materials

100 g (all sizes) Arwetta Classic by Filcolana in colour 255 (Limelight)
100 (100) 110 (125) 125 g Tilia fra Filcolana in colour 255 (Limelight)
3 and 4 mm circular needle, 80 cm
Double-pointed needles in the same sizes, if the magic loop technique is not used
Stitch markers

Sizes

S (M) L (XL) XXL

Measurements

Body, chest: 86-92 (92-100) 100-108 (108-116) 116-124 cm
Sweater, chest: 90 (98) 109 (116) 126 cm
Total length: 54 (57) 57 (59) 59 cm

Gauge

22 sts and 32 rows in stockinette stitch on a 4 mm needle with 1 strand of Arwetta Classic + 1 strand of Tilia = 10 x 10 cm



Directions for knitting

Kastellet is worked from the top down with a round yoke in a simple eyelet pattern worked in 1 strands of Tilia held together. The body is worked in stockinette stitch with 1 strand of Tilia and 1 strand of Arwetta Classic held together. The top has short sleeves.

Yoke

Cast on 98 (100) 102 (104) 104 sts on a 3 mm circular needle with 2 strands of Tilia held together. Join in the round and knit 8 rounds of twisted rib (k1 through the back loop, p1). Place a marker for the beginning of the round

Change to a 4 mm circular needle and work in pattern as follows:

Round 1: Knit.

Round 2: Work increases as described below.

Rounds 3-7: Knit.

Round 8: *Yarn over, k2tog*. Repeat from * to * to end of round.

Repeat these 8 rounds, but work the 2nd round as follows:

1st time: Knit 0 (2) 4 (6) 6, *M1, k7*. Repeat from * to * to end of round.

There are 112 (114) 116 (118) 118 sts on the needle.
2nd time: Knit 0 (2) 4 (6) 6, *M1, k7*. Repeat from * to * to end of round.

There are 128 (130) 132 (134) 134 sts on the needle.
3rd time: Knit 8 (0) 2 (4) 4, *M1, k5*. Repeat from * to * to end of round.

There are 152 (156) 158 (160) 160 sts on the needle.
4th time: Knit 2 (6) 8 (0) 0, *M1, k5*. Repeat from * to * to end of round.

There are 182 (186) 188 (192) 192 sts on the needle.
5th time: Knit 2 (6) 8 (0) 0, *M1, k6*. Repeat from * to * to end of round.

There are 212 (216) 218 (224) 224 sts on the needle.
6th time: Knit 8 (12) 2 (8) 8, *M1, k6*. Repeat from * to * to end of round.

There are 246 (250) 254 (260) 260 sts on the needle.
7th time: Knit 6 (10) 2 (8) 8, *M1, k6*. Repeat from * to * to end of round.

There are 286 (290) 296 (302) 302 sts on the needle.
8th time: Knit 6 (10) 8 (2) 2, *M1, knit 7 (7) 6 (6) 6*. Repeat from * to * to end of round.

There are 326 (330) 344 (352) 352 sts on the needle.

Size (M) L (XL) XXL only

9th time: Knit - (10) 8 (0) 4, *M1, knit - (10) 6 (8) 6*. Repeat from * to * to end of round.

There are - (362) 400 (396) 410 sts on the needle.

Size (XL) XXL only

10th time: Knit - (-) - (0) 2, *M1, knit - (-) - (11) 6*. Repeat from * to * to end of round.

There are - (-) - (432) 478 sts on the needle.

All sizes

The 8 rounds of the pattern have now been repeated a total of 8 (9) 9 (10) 10 times.

Now work in 1 strand of Tilia and 1 strand of Arwetta Classic and divide the sts for sleeves and body as follows: Move the first 70 (80) 86 (94) 106 sts to a stitch holder for the first sleeve, cast on 6 in extension of the sts on the needle, knit 93 (101) 114 (122) 133 sts for the front, move the next 70 (80) 86 (94) 106 sts to a stitch holder for the second sleeve, cast on 6 new sts in extension of the sts on the needle, knit 93 (101) 114 (122) 132 sts for the back. Continue in stockinette stitch across the 198 (214) 240 (256) 278 sts for the body until the work measures 25 cm (from where the sts were divided). Change to a 3 mm needle and work 5 cm of twisted rib (k1 through the back loop, p1). Bind off.

Sleeves

Place the sts for the first sleeve on a 4 mm needle and cast on 6 new sts under the sleeve. There are now a total of 76 (86) 92 (100) 112 for on the sleeve. Join in the round and knit 4 rounds with 1 strand of Tilia and 1 strand of Arwetta Classic held together. Change to a 3 mm needle and work 2 cm of twisted rib (k1 through the back loop, p1). Bind off. Work the second sleeve the same way as the first.

Finishing

Sew the hole under each sleeve. Weave in all ends.